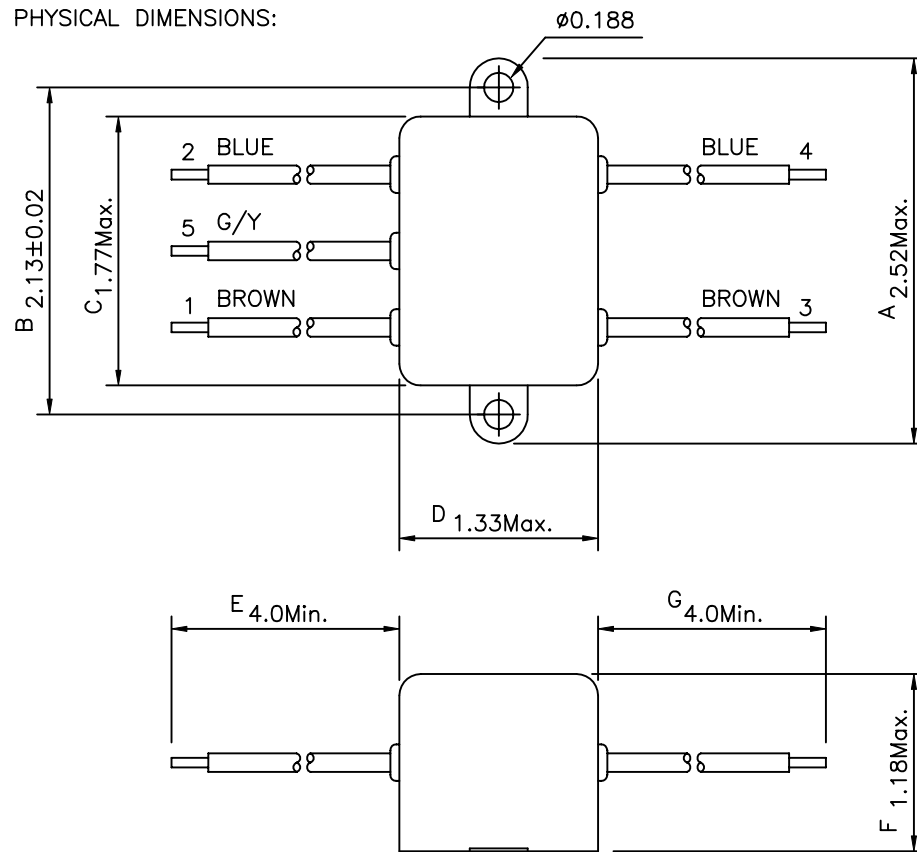
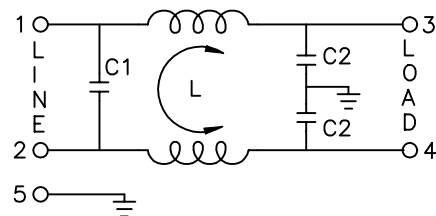


Revision			
Rev.	Description	Date	Approved

PHYSICAL DIMENSIONS:



SCHEMATIC:



L: 1.5mH
C1: 0.1uF
C2: 3300pF

1. ELECTRICAL CHARACTERISTICS:

- 1-1. VOLTAGE RATING 115/250VAC
- 1-2. CURRENT RATING
 - A. AT 115VAC 10 A RMS Max.
 - B. AT 250VAC 10 A RMS Max.
- 1-3. OPERATING FREQUENCY..... 50/60 Hz
- 1-4. LEAKAGE CURRENT: EACH LINE TO GROUND
 - A. @115VAC 60Hz 0.25 mA Max.
 - B. @250VAC 50Hz 0.45 mA Max.
- 1-5. HIPOT RATING (FOR ONE MINUTE)
 - A. LINE TO GROUND 2250VDC
 - B. LINE TO LINE 1450VDC
- 1-6. TEMPERATURE RANGE: -25 TO +85 DEGREE C
- 1-7. MINIMUM INSERTION LOSS IN dB: (AT 50 OHM SYSTEM)

FREQ. MHz	.01	.05	.10	.15	.50	1.0	5.0	10	30
COM. MODE dB	/	/	/	20	30	35	50	50	45
DIF. MODE dB	/	/	/	6	15	20	44	45	45

1-8. SAFETY



Dim range (mm)		Tolerance +/- (mm)		Qualtek Electronics Corp. PPC DIVISION		
Part Number: 851-10/008				Description: EMI FILTER		
0-1	0.15	UNIT: INCH		Drawn/Date		Checked/Date
1-6	0.20	Approved/Date		B.ZHANG		01-17-03
6-18	0.30	JZH/01-17-03		01-17-03		01-17-03
18-50	0.50					
50-120	0.70					
120-250	0.90					
250-500	1.20					